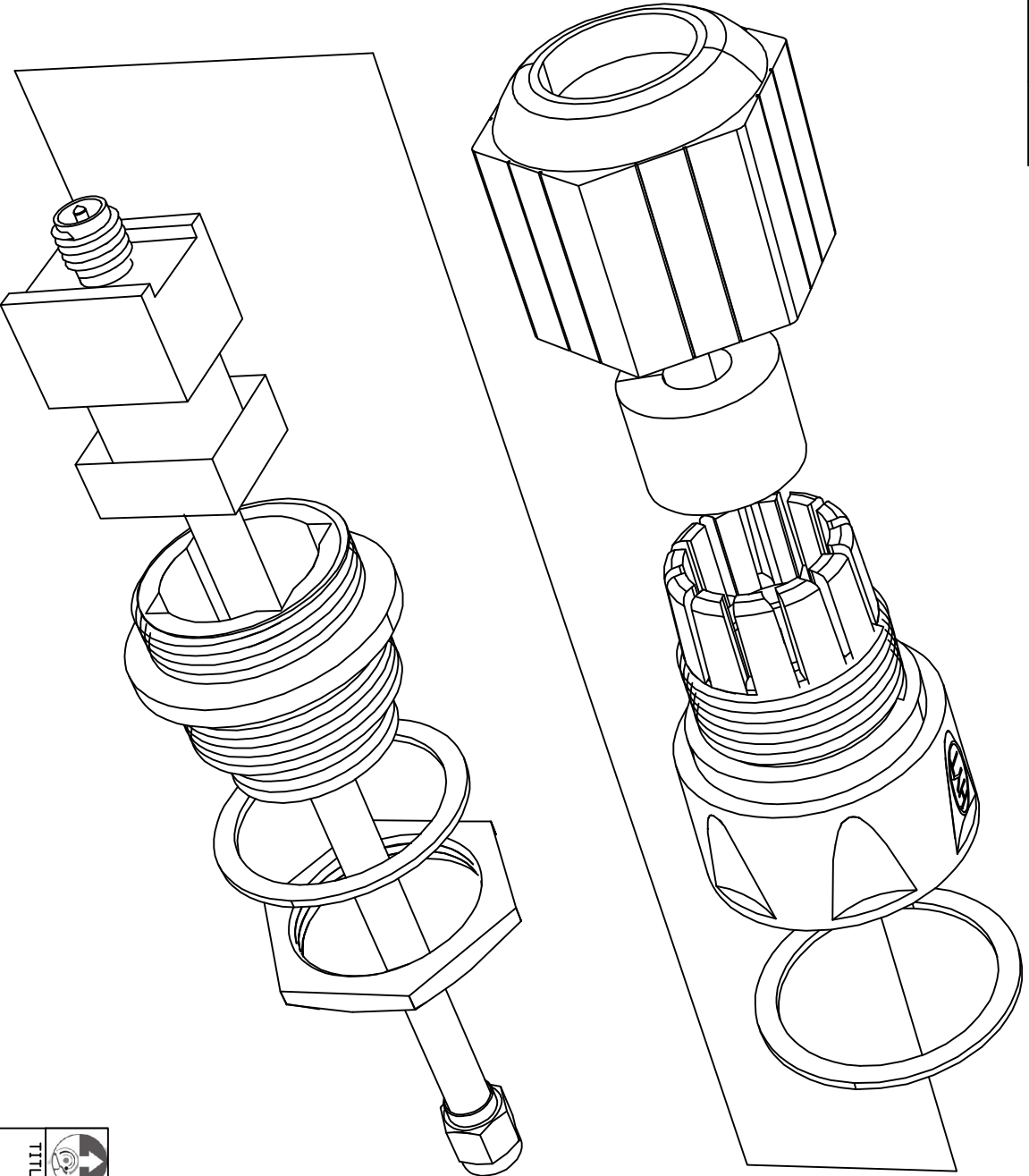



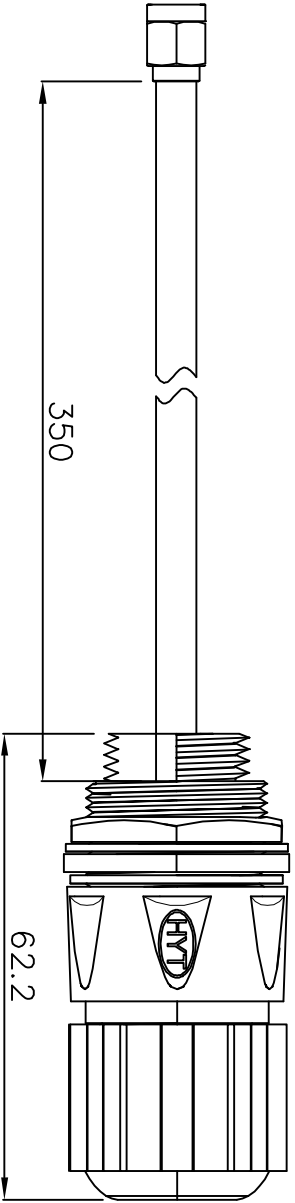
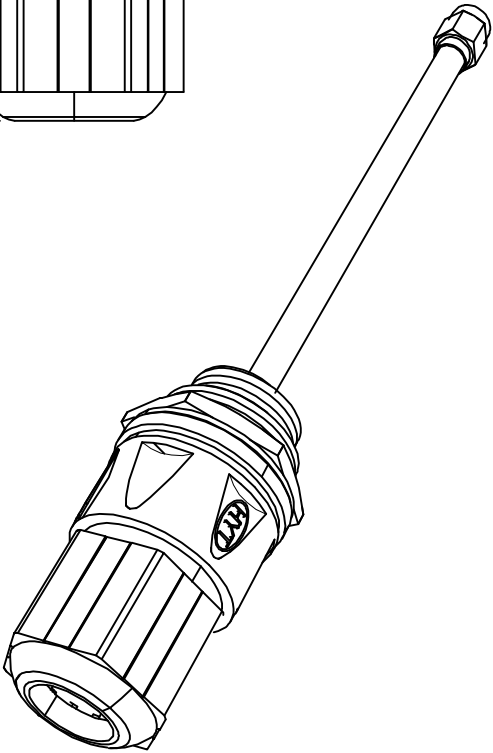
REV	DATE	DESCRIPTION	DRAWN



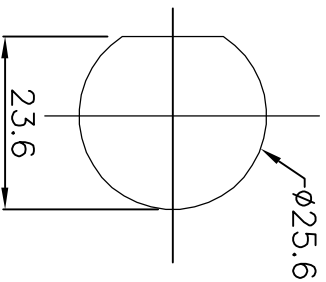
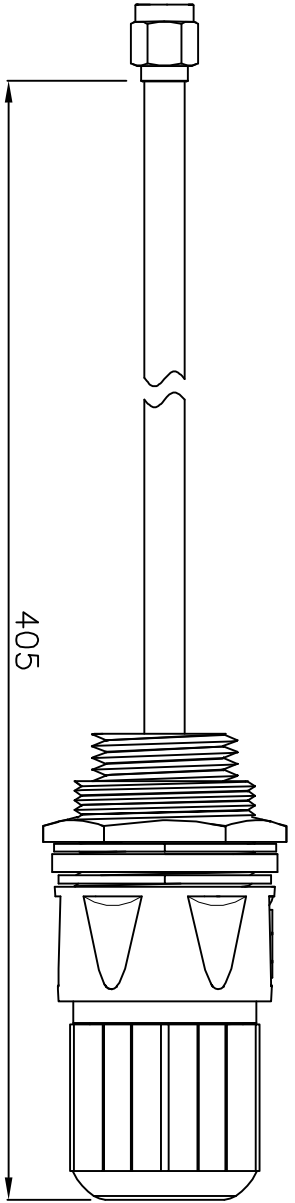
NOTE	DIMENSION
1. STRIP ALL BURRS	UNLESS OTHERWISE NOTED TOLERANCES
2. ALL DIMENSIONS ARE AFTER PLATING	0.X = ±0.2
3. DIAMETERS ON COMMON CENTERS TO BE CONCENTRIC WITHIN 0.1 T.I.R	0.XX = ±0.1
4. CHAMFER 1ST & LAST THREADS AS SHOWN	0.XXX = ±0.05
5. BREAK ALL CORNERS & EDGES CO:1.5 MAX.	

 Hwayou International Co., Ltd.	
TITLE Ethernet Waterproof Connector With Sma Female Molding ASSY-1	
DRAWING NO.	HYRF-SMA01
APPROVED	DRAWN DATE 08/07/10
CHECKED	SCALE 2:1
DRAWN	UNIT mm
ALICE	

REV	DATE	DESCRIPTION	DRAWN



62.2



Hole dimension

- NOTE
1. STRIP ALL BURRS.
 2. ALL DIMENSIONS ARE AFTER PLATING.
 3. DIAMETERS ON COMMON CENTERS TO BE CONCENTRIC WITHIN 0.1 T.I.R
 4. CHAMFER 1ST & LAST THREADS 45°
 5. BREAK ALL CORNERS & EDGES CO.15 MAX.

DIMENSION

UNLESS OTHERWISE NOTED TOLERANCES

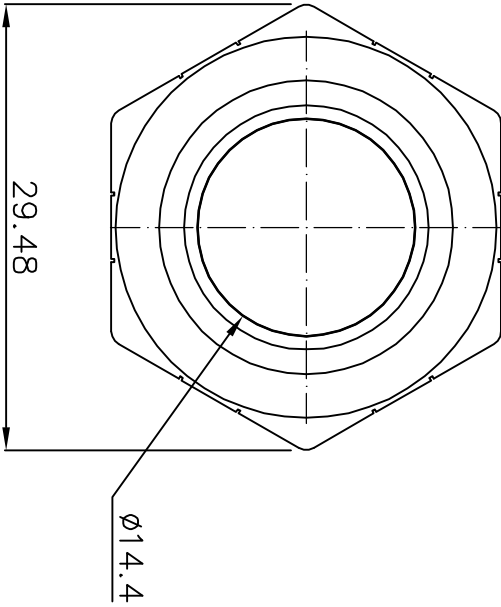
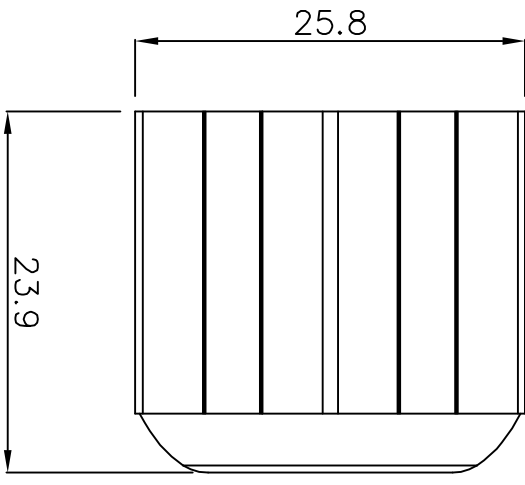
- 0.X = ±0.2
- 0.XX = ±0.1
- 0.XXX = ±0.05



Hwayou International Co., Ltd.
 TITLE Ethernet Waterproof Connector
 With Sma Female Molding ASSY-2

DRAWING NO.	HYRF-SMA01
APPROVED	DRAWN DATE
CHECKED	SCALE
DRAWN	UNIT
ALICE	mm

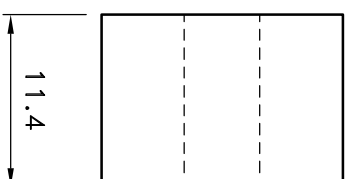
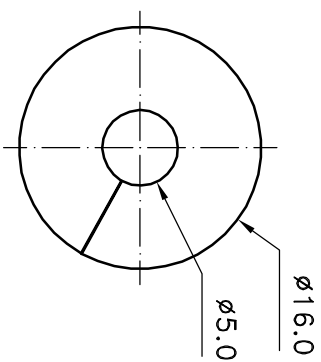
REV	DATE	DESCRIPTION	DRAWN



NOTE	DIMENSION
1. STRIP ALL BURRS.	UNLESS OTHERWISE NOTED TOLERANCES 0.X = ± 0.2 0.XX = ± 0.1 0.XXX = ± 0.05
2. ALL DIMENSIONS ARE AFTER PLATING.	
3. DIAMETERS ON COMMON CENTERS.	
4. CHAMFER 1.5 \times & LAST 1.5 \times WITHIN 0.1 T.I.R.	
5. BREAK ALL CORNERS & EDGES CO.15 MAX.	

TITLE WEC-Top Screw	
DRAWING NO. R1-0001	
APPROVED	DRAWN DATE 08/07/10
CHECKED	SCALE 2:1
DRAWN ALICE	UNIT mm

REV	DATE	DESCRIPTION	DRAWN
1			



NOTE	DIMENSION
1. STRIP ALL BURRS. 2. ALL DIMENSIONS ARE AFTER PLATING. 3. DIAMETERS ON COMMON CENTERS. 4. CHAMFER 1ST & LAST HEADS WITHIN 0.1 T.I.R. 5. BREAK ALL CORNERS & EDGES CO.15 MAX.	UNLESS OTHERWISE NOTED TOLERANCES $X = \pm 0.3$ $0.X = \pm 0.2$ $0.XX = \pm 0.1$



Hwayou International Co., Ltd.

TITLE

WEC-Waterproof Washer

DRAWING NO.

R1-0013

APPROVED

DRAWN DATE
09/02/16

CHECKED

SCALE
2:1

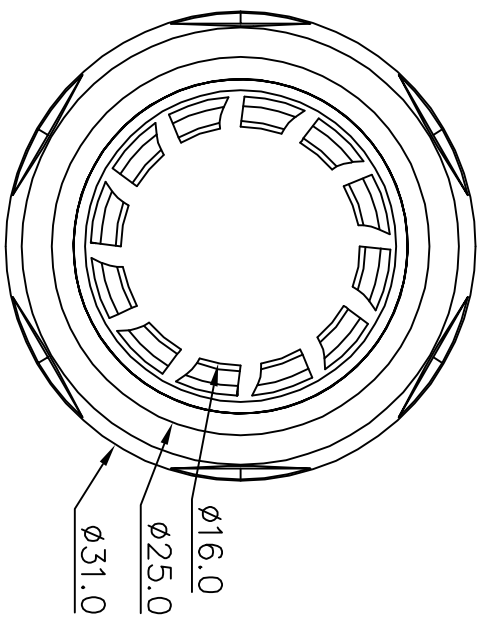
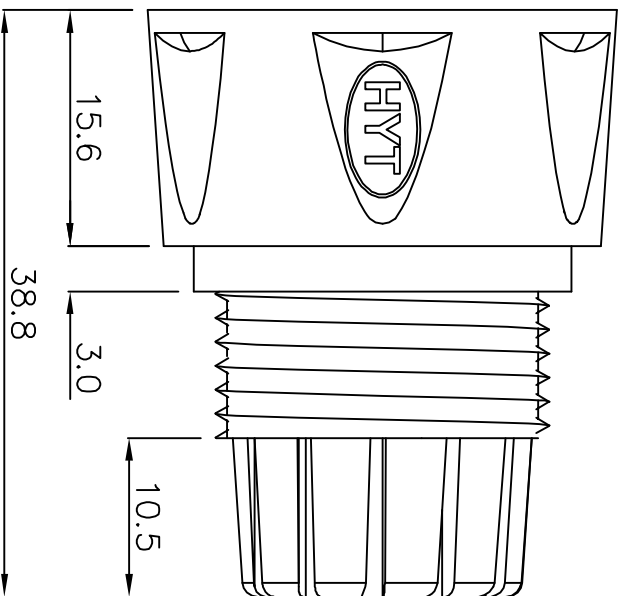
DRAWN

ALICE

UNIT

mm

REV	DATE	DESCRIPTION	DRAWN



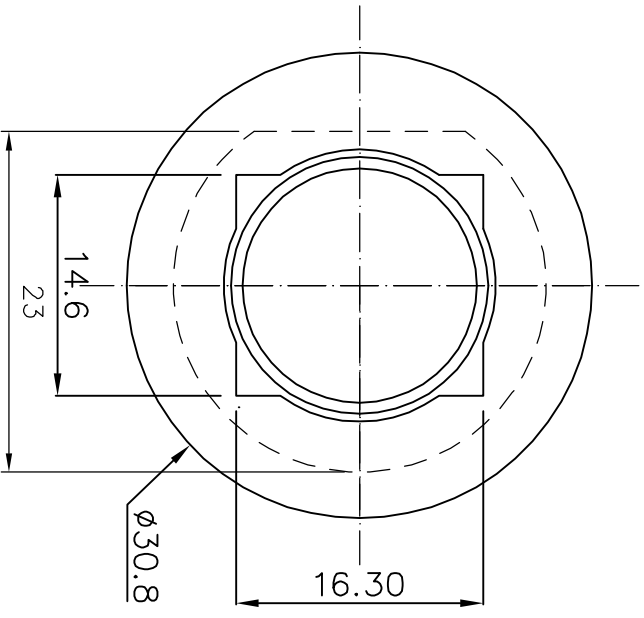
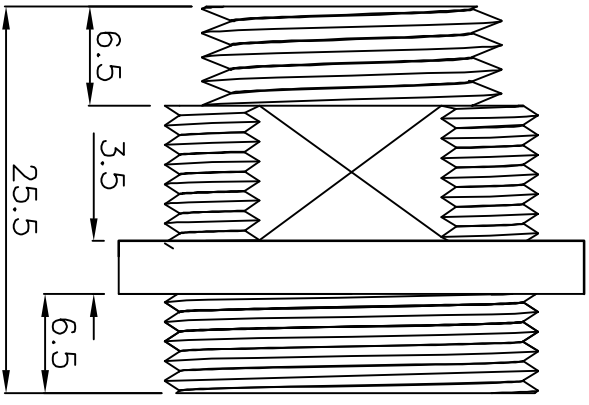
NOTE
 1. STRIP ALL BURRS.
 2. ALL DIMENSIONS ARE AFTER PLATING.
 3. DIAMETERS ON COMMON CENTERS TO BE CONCENTRIC WITHIN 0.1 T.I.R.
 4. CHAMFER 1st & LAST HEADS.
 5. BREAK ALL CORNERS & EDGES CO.15 MAX.

DIMENSION
 UNLESS OTHERWISE NOTED TOLERANCES
 0.X = ± 0.2
 0.XX = ± 0.1
 0.XXX = ± 0.05



TITLE WEC- Clip	
DRAWING NO. R1-0003	
APPROVED	DRAWN DATE 08/07/10
CHECKED	SCALE 2:1
DRAWN ALICE	UNIT mm

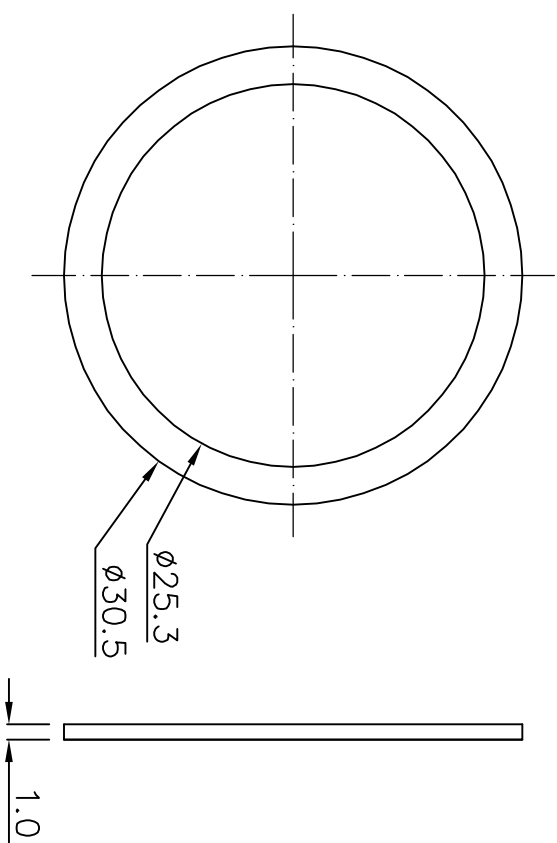
REV	DATE	DESCRIPTION	DRAWN



NOTE	DIMENSION
1. STRIP ALL BURRS.	UNLESS OTHERWISE NOTED TOLERANCES
2. ALL DIMENSIONS ARE AFTER PLATING.	0.X = ±0.2
3. DIAMETERS ON COMMON CENTERS TO BE CONCENTRIC WITHIN 0.1 T.I.R.	0.XX = ±0.1
4. CHAMFER 1ST & LAST HEADS.	0.XXX = ±0.05
5. BREAK ALL CORNERS & EDGES CO.15 MAX.	

TITLE WEC-Body	
DRAWING NO. R1-0010	DRAWN DATE 08/07/10
APPROVED	SCALE 2:1
CHECKED	UNIT mm
DRAWN ALICE	

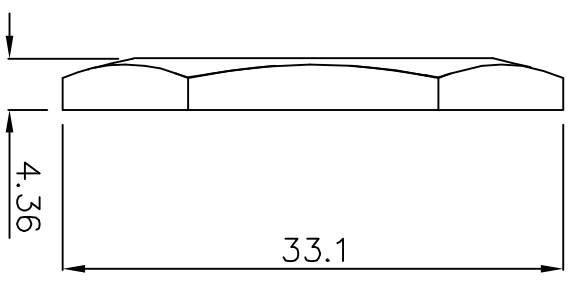
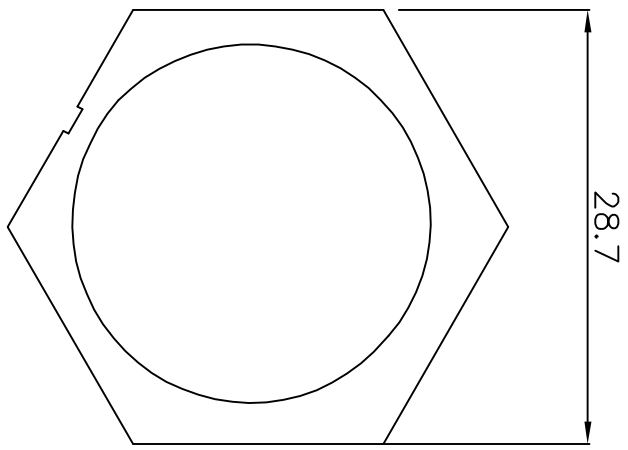
REV	DATE	DESCRIPTION	DRAWN



NOTE	DIMENSION
1. STRIP ALL BURRS.	UNLESS OTHERWISE NOTED TOLERANCES
2. ALL DIMENSIONS ARE AFTER PLATING.	0.X = ± 0.2
3. DIAMETERS ON COMMON CENTERS.	0.XX = ± 0.1
4. CHAMFER 1ST & LAST WITHIN 0.1 T.I.R.	0.XXX = ± 0.05
5. BREAK ALL CORNERS & EDGES CO.15 MAX.	

TITLE WEC-Waterproof Spacer 01	
DRAWING NO. R1-0006	DRAWN DATE 08/07/10
CHECKED	SCALE 2:1
DRAWN ALICE	UNIT mm

REV	DATE	DESCRIPTION	DRAWN



NOTE	DIMENSION
1. STRIP ALL BURRS.	UNLESS OTHERWISE
2. ALL DIMENSIONS ARE	NOTED TOLERANCES
AFTER PLATING.	0.X = ±0.2
3. DIAMETERS ON COMMON	0.XX = ±0.1
CENTERS,	0.XXX = ±0.05
TO BE CONCENTRIC	
WITHIN 0.1 T.I.R.	
4. CHAMFER 15° & LAST	
THREADS 45° & LAST	
5. BREAK ALL CORNERS &	
EDGES CO.15 MAX.	



TITLE
WEC-Nut

DRAWING NO.
R1-0007

APPROVED

CHECKED

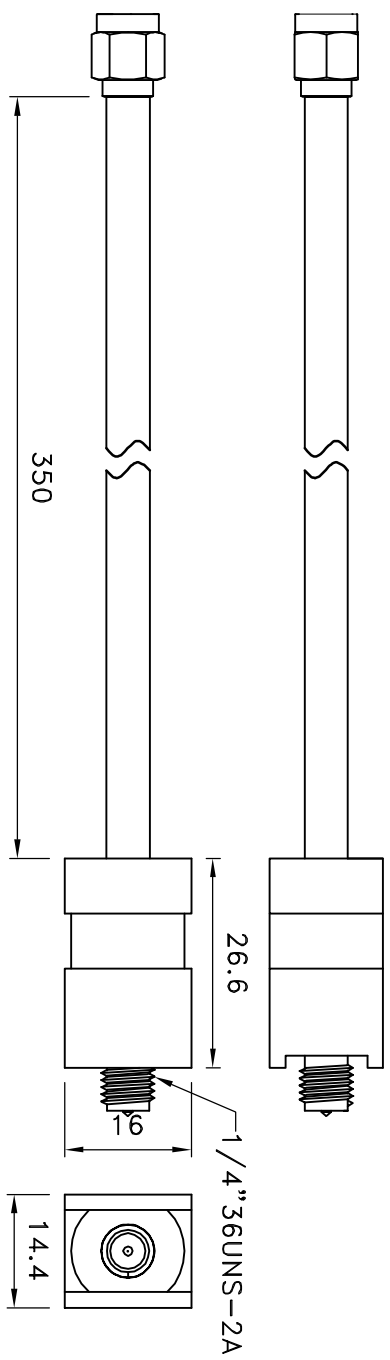
DRAWN
ALICE

DRAWN DATE
08/07/10

SCALE
2:1

UNIT
mm

REV	DATE	DESCRIPTION	DRAWN



NOTE	DIMENSION
1. STRIP ALL BURRS.	UNLESS OTHERWISE NOTED TOLERANCES 0.X = ±0.2 0.XX = ±0.1 0.XXX = ±0.05
2. ALL DIMENSIONS ARE AFTER PLATING.	
3. DIAMETERS ON COMMON CENTERS, TO BE CONCENTRIC WITHIN 0.1 T.I.R.	
4. CHAMFER 1.5° & LAST BREAK ALL CORNERS & EDGES CO.15 MAX.	

 Hwayou International Co., Ltd.	
TITLE WEC -SMA Adapter	
DRAWING NO. CT-0001	DRAWN DATE 08/07/10
APPROVED	SCALE 1:1
CHECKED	UNIT mm
DRAWN ALICE	